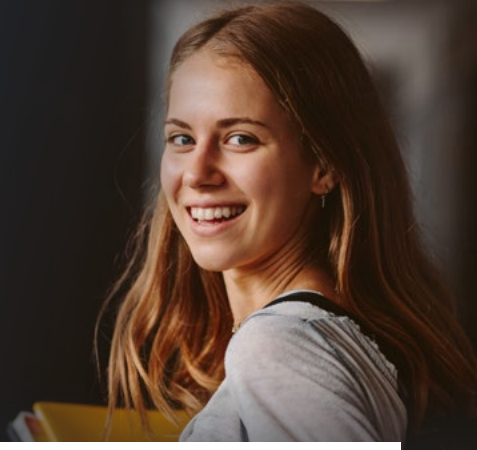




LineTrust.
South Canterbury



UNIVERSITY SCHOLARSHIP PROGRAMME POLICY.

Welcome to LineTrust South Canterbury Scholarship Fund, where we aim to support students pursuing degrees that can contribute to the electricity distribution sector and benefit consumers in South Canterbury and throughout New Zealand.

Eligibility and Funding:

- The scholarship is available to residents within the South Canterbury region, spanning from the Waitaki to the Rangitata Rivers and from the Southern Alps to the sea.
- Our scholarship programme covers all or part of the candidate's course fees on a yearly basis, subject to satisfactory completion of prior year's studies and reapplication. While we don't guarantee ongoing funding, we strive to help dedicated students achieve their educational goals.
- LineTrust South Canterbury determines the number of scholarships awarded annually, as well as the value of each individual scholarship.
- The value of a single scholarship can reach up to \$5,000 per applicant in a given year.

Fields of Study:

- We offer scholarships to students in various fields, including:
 - computer science
 - mathematics
 - data analytics
 - electronic or electrical engineering
 - sustainability
 - Master of Science
 - or similar disciplines.
- We emphasise competencies involving cognitive science, business intelligence, and artificial intelligence, fostering innovative approaches to energy distribution.

Join **LineTrust South Canterbury Scholarship Fund** today and pave the way for a **brighter, more efficient energy future!**





LineTrust.
South Canterbury



UNIVERSITY SCHOLARSHIP

CANDIDATE CRITERIA AND ELIGIBILITY

To be eligible for the LineTrust South Canterbury Scholarship Fund, candidates must meet the following criteria:

- Candidates are required to be New Zealand citizens or have legal permanent residency (evidence required).
- Candidates are required to have residency in South Canterbury or have attended a South Canterbury secondary school.
- Candidates are required to provide evidence of acceptance into the approved degree programme they will be studying.
- The degree pursued is required to be energy-related, aligning with the electricity distribution sector.
- Scholarships are awarded for one year only, but all applicants are eligible to re-apply if continuing their study towards an approved degree.
- Scholarship recipients are required to provide evidence of their academic results for the year covered by the scholarship, ensuring accountability for the support received.
- As part of the scholarship, candidates may be offered university semester work, and potential postgraduate work placements with Alpine Energy Limited to facilitate successful career placements within the energy sector.
- Scholarship recipients may be required to supply photographs and other information for promotional purposes and to foster transparency and visibility.
- All scholarship payments will be made directly to the successful applicants.
- All shortlisted applicants will be interviewed by a panel, comprising at least two representatives of LineTrust South Canterbury (LTSC). The panel will make recommendations to a Trust meeting, and scholarships will be awarded by resolution of the full Trust.
- Students must inform LTSC if they have any other scholarships at the time of application or intend to apply for any during the scholarship period.
- LTSC reserves the right to cease the scholarship and request repayment at any time, subject to valid reasons and due process.
- In addition to the scholarship benefits, recipients are requested to provide a testimonial describing their experience and achievements. We also request that recipients supply images for promotional materials and attend the annual Alpine Energy Awards to foster networking and recognition.

Applications close on 15 September in the year prior to the year of study. Apply now to be a part of the LineTrust South Canterbury Scholarship Fund and embark on a rewarding journey towards a brighter future in the energy landscape.